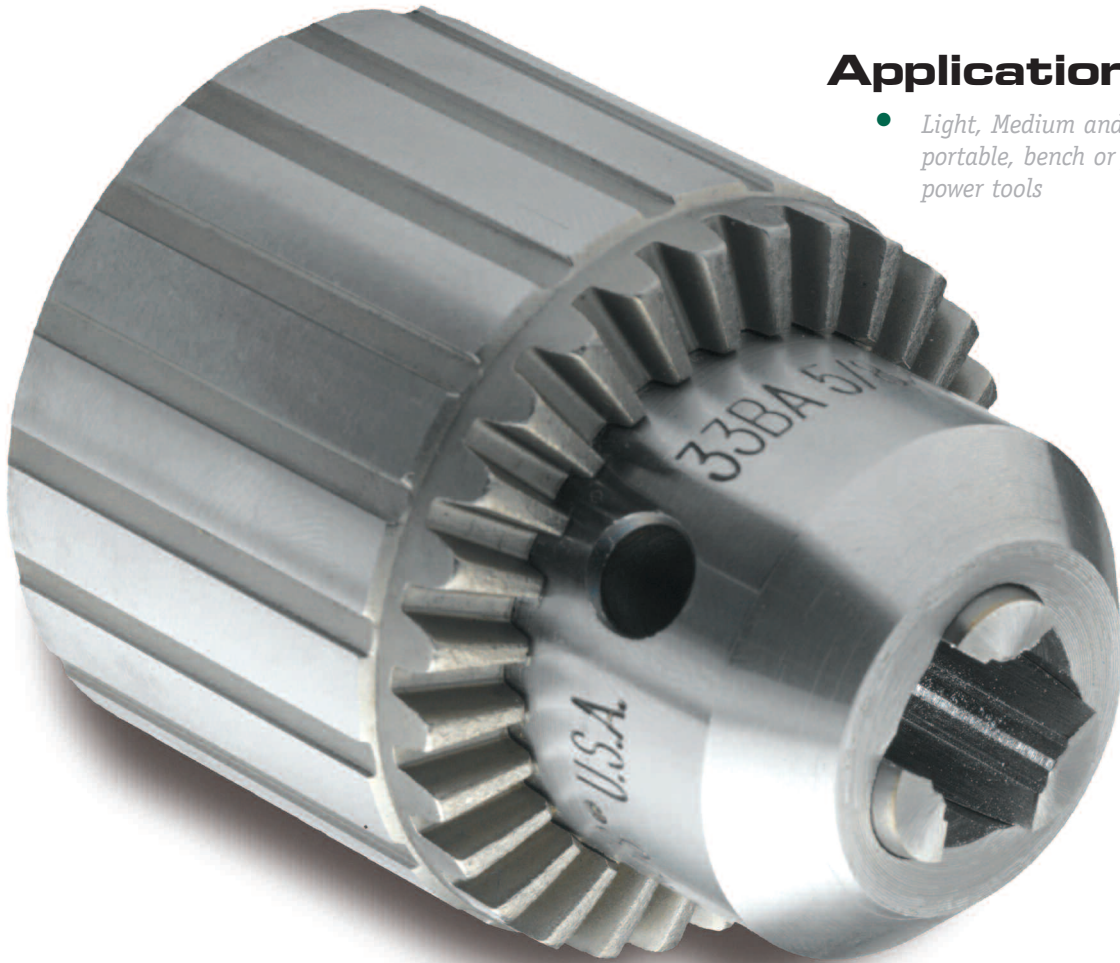


JACOBS PROFESSIONAL KEYED

DRILL CHUCKS



Application

- *Light, Medium and Heavy-Duty portable, bench or floor mounted power tools*

Features & Benefits

- *Threaded or tapered mounts on Heavy-Duty and Medium-Duty models.*
- *Center-ground jaws provide absolute straightness and alignment.*
- *One piece sleeve design eliminates cracks between driving teeth.*
- *Sleeve teeth, nose piece and keyholes are through-hardened, providing outstanding wear resistance.*

Jacobs[®]
C H U C K

JACOBS PROFESSIONAL KEYED

DRILL CHUCKS Specifications

HEAVY DUTY

Model	Capacity				Mount		Key		Dimensions		Sleeve Diameter		Hard Pin Grip Torque		Runout	
	Minimum	Maximum							Closed Length	Open Length	in	mm	Ft-lb Out	Nm Out	in	mm
	in	mm	in	mm			in	mm	in	mm	in	mm	Ft-lb Out	Nm Out	in	mm
3A	0.125	3.000	0.625	16.000	3JT	K3	3.810	96.800	2.870	72.900	2.300	58.400	20.83	28.25	0.004"@1.50"	0.10mm@38mm
3KD	0.125	3.000	0.625	16.000	3JT	K3	4.060	103.100	3.120	79.200	2.290	58.200	20.83	28.25	0.004"@1.50"	0.10mm@38mm
3PD	0.125	3.000	0.625	16.000	3JT	K3	4.060	103.100	3.120	79.200	2.290	58.200	20.83	28.25	0.004"@1.50"	0.10mm@38mm
34-02	0.040	1.000	0.500	13.000	2JT	K3	3.520	89.400	2.740	69.600	2.040	51.800	18.75	25.43	0.004"@1.50"	0.10mm@38mm
34-06	0.040	1.000	0.500	13.000	6JT	K3	3.520	89.400	2.740	69.600	2.040	51.800	18.75	25.43	0.004"@1.50"	0.10mm@38mm
34-33	0.040	1.000	0.500	13.000	33JT	K3	3.520	89.400	2.740	69.600	2.040	51.800	18.75	25.43	0.004"@1.50"	0.10mm@38mm
34-33C	0.040	1.000	0.500	13.000	33JT	K3C	3.710	94.200	2.930	74.400	2.000	50.800	18.75	25.43	0.004"@1.50"	0.10mm@38mm
36	0.180	5.000	0.800	20.300	3JT	K4	4.060	103.100	3.140	79.800	2.540	64.500	56.25	76.28	0.004"@1.50"	0.10mm@38mm
36KD	0.180	5.000	0.800	20.300	3JT	K4	4.250	108.000	3.420	86.900	2.540	64.500	56.25	76.28	0.004"@1.50"	0.10mm@38mm
36PD	0.180	5.000	0.800	20.300	3JT	K4	4.250	108.000	3.420	86.900	2.540	64.500	56.25	76.28	0.004"@1.50"	0.10mm@38mm
3B 5/8	0.125	3.000	0.625	16.000	5/8-16	K3	3.810	97.000	2.840	72.000	2.290	58.000	20.83	28.25	0.004"@1.50"	0.10mm@38mm
7BA 3/8	0 (1)	1.000	0.250	6.500	3/8-24	K7	2.230	57.000	1.740	44.000	1.330	34.000	4.58	6.22	0.004"@1.50"	0.10mm@38mm
32BA 1/2	0 (1)	1.000	0.375	10.000	1/2-20	K32	3.050	77.000	2.310	59.000	1.790	45.000	12.00	16.27	0.004"@1.50"	0.10mm@38mm
35B 1/2	0.156	4.000	0.625	16.000	1/2-20	K3	3.520	89.000	2.740	70.000	2.040	52.000	18.75	25.43	0.004"@1.50"	0.10mm@38mm
36B 3/4	0.188	5.000	0.800	20.300	3/4-16	K4	4.120	105.000	3.200	81.000	2.540	65.000	56.25	76.28	0.004"@1.50"	0.10mm@38mm
36B 5/8	0.188	5.000	0.800	20.300	5/8-16	K4	4.120	105.000	3.200	81.000	2.540	65.000	56.25	76.28	0.004"@1.50"	0.10mm@38mm

MEDIUM DUTY

Model	Capacity				Mount		Key		Dimensions		Sleeve Diameter		Hard Pin Grip Torque		Runout	
	Minimum	Maximum							Closed Length	Open Length	in	mm	Ft-lb Out	Nm Out	in	mm
	in	mm	in	mm			in	mm	in	mm	in	mm	Ft-lb Out	Nm Out	in	mm
0	0.0135	0.000	0.156	4.000	0JT	K0	1.450	36.800	1.100	27.900	0.850	21.600	2.00	2.71	0.004"@0.75"	0.10mm@19mm
1A	0.040	1.000	0.250	6.500	1JT	K1	1.920	48.800	1.540	39.100	1.180	30.000	3.50	4.75	0.004"@1.00"	0.10mm@25mm
2A	0.040	1.000	0.375	10.000	2JT	K2	2.810	71.400	2.170	55.100	1.670	42.400	10.42	14.13	0.004"@1.50"	0.10mm@38mm
31-01	0.040	1.000	0.375	10.000	1JT	K30	2.490	63.200	2.010	51.100	1.420	36.100	8.33	11.30	0.004"@1.50"	0.10mm@38mm
31-02	0.040	1.000	0.375	10.000	2JT	K30	2.490	63.200	2.010	51.100	1.420	36.100	8.33	11.30	0.004"@1.50"	0.10mm@38mm
33	0.080	2.000	0.500	13.000	33JT	K32	3.210	81.500	2.520	64.000	1.792	45.500	17.50	23.73	0.004"@1.50"	0.10mm@38mm
3326A	0.080	2.000	0.500	13.000	0.625	K32	3.540	89.900	2.850	72.400	1.792	45.500	17.50	23.73	0.004"@1.50"	0.10mm@38mm
33KD	0.080	2.000	0.500	13.000	33JT	K32	3.460	87.900	2.770	70.400	1.792	45.500	17.50	23.73	0.004"@1.50"	0.10mm@38mm
OB 5/16	0.0135	0.000	0.156	4.000	5/16-24	K0	1.530	39.000	1.170	30.000	0.850	22.000	2.00	2.71	0.004"@0.75"	0.10mm@19mm
1B 3/8	0.040	1.000	0.250	6.500	3/8-24	K1	1.950	50.000	1.570	40.000	1.120	28.000	3.50	4.75	0.004"@1.00"	0.10mm@25mm
2BA 3/8	0.040	1.000	0.375	10.000	3/8-24	K2	2.810	71.000	2.170	55.000	1.670	42.000	10.42	14.13	0.004"@1.50"	0.10mm@38mm
41BA 3/8	0.040	1.000	0.375	10.000	3/8-24	K30	2.500	63.500	2.050	52.070	1.430	36.300	10.00	13.56	0.014"@3.35"	0.356mm@85mm
41BA 3/8S	0.040	1.000	0.375	10.000	3/8-24	K30	2.500	63.500	2.050	52.070	1.430	36.300	10.00	13.56	0.014"@3.35"	0.356mm@85mm
41BA 1/2	0.040	1.000	0.375	10.000	1/2-20	K30	2.500	63.500	2.050	52.070	1.430	36.300	10.00	13.56	0.014"@3.35"	0.356mm@85mm
33BA 1/2	0.080	2.000	0.500	13.000	1/2-20	K32	3.090	78.000	2.430	62.000	1.790	45.000	17.50	23.73	0.004"@1.50"	0.10mm@38mm
33BA 3/8	0.080	2.000	0.500	13.000	3/8-24	K32	3.090	78.000	2.430	62.000	1.790	45.000	17.50	23.73	0.004"@1.50"	0.10mm@38mm
33BA 5/8	0.080	2.000	0.500	13.000	5/8-24	K32	3.090	78.000	2.430	62.000	1.790	45.000	17.50	23.73	0.004"@1.50"	0.10mm@38mm

LIGHT DUTY

Model	Capacity				Mount		Key		Dimensions		Sleeve Diameter		Hard Pin Grip Torque		Runout	
	Minimum	Maximum							Closed Length	Open Length	in	mm	Ft-lb Out	Nm Out	in	mm
	in	mm	in	mm			in	mm	in	mm	in	mm	Ft-lb Out	Nm Out	in	mm
22BA 3/8	0.063	1.600	0.375	10	3/8-24	KK	2.420	61.500	1.890	48.00	1.42	36.10	10.00	13.56	0.010" @ 3.35"	0.25mm @ 85mm
24BA 3/8	0.063	1.600	0.500	13	3/8-24	KK	3.000	76.200	2.300	58.40	1.68	42.67	15.00	20.34	0.006" @ 1.50"	0.152mm @ 85mm
26BA 1/2	0.063	1.600	0.500	13	1/2-20	KK	3.000	76.200	2.300	58.40	1.72	43.60	15.00	20.34	0.006" @ 1.50"	0.152mm @ 85mm

JACOBS NORTH AMERICA

World Headquarters
and U.S. Factory
One Jacobs Road
P.O. Box 592
Clemson, SC 29633, USA
Phone: 864.654.5926
Fax: 864.654.5001

JACOBS EUROPE

Distribution Center
The Jacobs Manufacturing Co.
Danaher House
Parkway One Business Centre
Parkway Drive
Sheffield
South Yorkshire, S9 4WU, England
Phone: 011 44 114 256 4200
Fax: 011 44 114 256 4201

JACOBS ASIA

Manufacturing & Sales
No 26
Baiyu Road
Suzhou Industrial Park
Suzhou, Jiangsu Province, China
215021
Phone: 011 86 512 6761 6165
Fax: 011 86 512 6761 2066

